

ABRASIVE WATERJET CUTTING

Two in-house, ultra high pressure water jet cutters by Flow International
 Maximum work piece: 6' x 12'
 Cuts up to 4" thick steel or 5-1/2" thick aluminum. Also cuts plastics, rubber, glass, lexan, ceramic tile, brass, copper, carbon fiber, wood and much more! .003" tolerance in 12' work envelope
 NO heat affected zone!! • Burr free finish
 Accepts .DXF , .IGS, .DXB, .MNS, .VGR, and DCZ drawing formats.
*If you can draw it - we can cut it!
 Can't draw it? Give us a sketch and our Engineering Department will draw it for you.*



Stainless steel concierge desk



Complete, ready to install fabricating



Simple to complex tube bending, rolling, cutting and welding



11 Mennonite Church Rd.
 Spring City, Pa. 19475
 800-523-3353 ext. 133 / 134
 Fax 610-948-7342
 www.swjetfab.com



27,000 Sq. Ft. Facility

SAVE MONEY

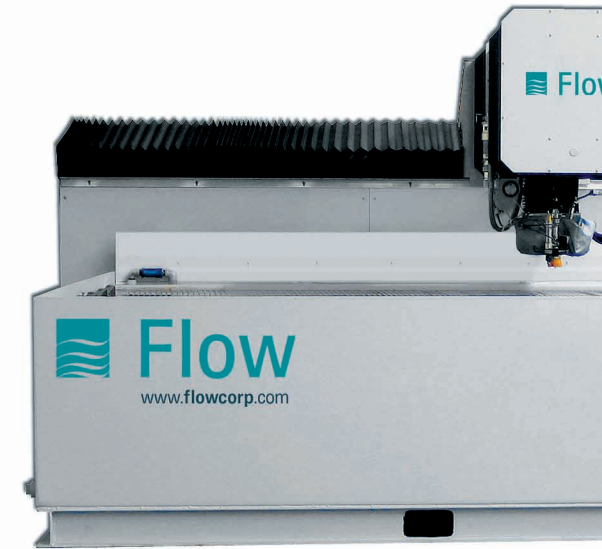
SAVE TIME

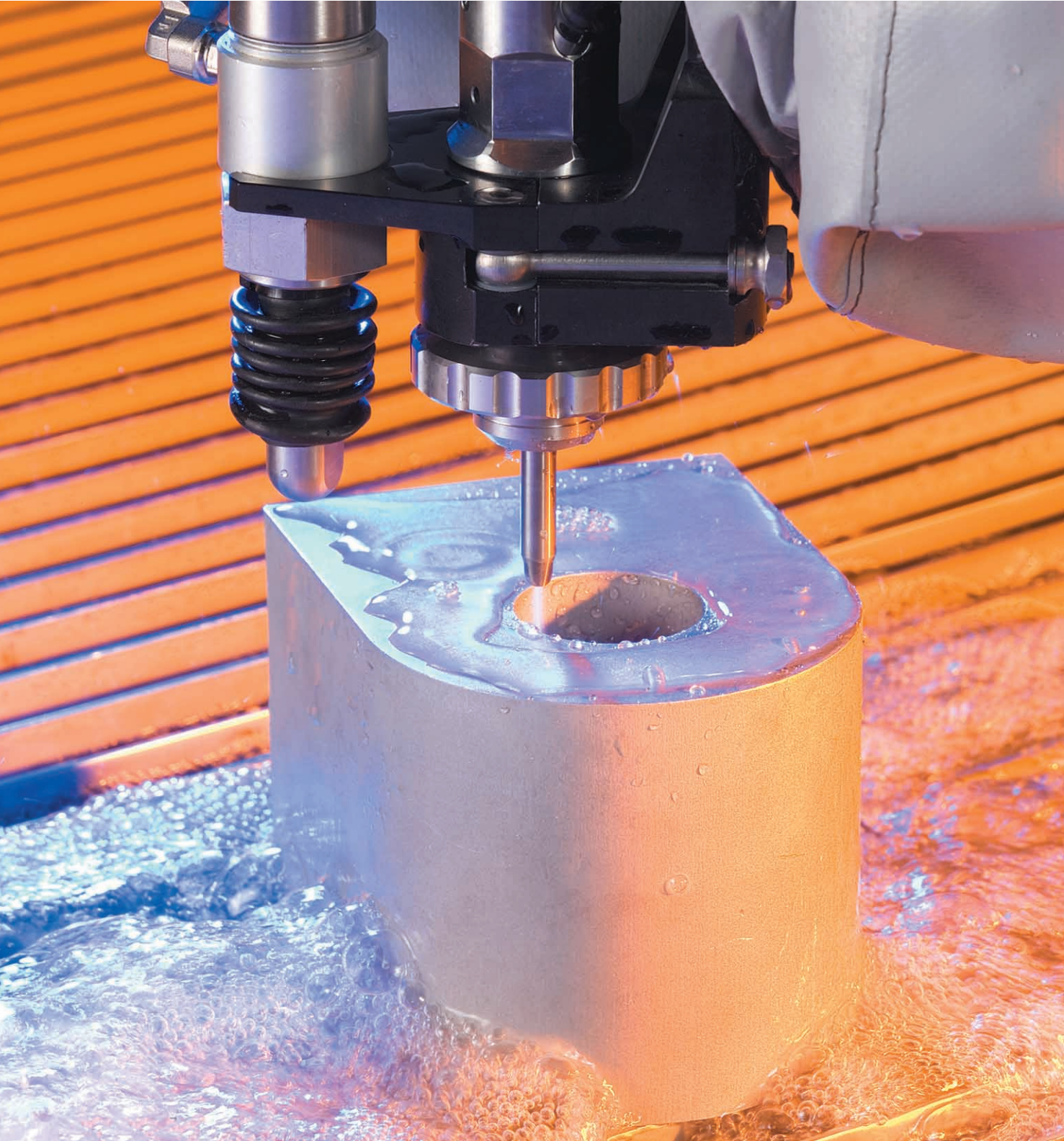
IMPROVE PRODUCTIVITY

Put our years of waterjet, fabricating, welding, machining, and engineering service experience to work for you.



Since 1959, S&W Race Cars has served the racing industry as an innovator, developer and manufacturer of many of the high quality components found on today's record holding drag race vehicles. Until recently, S&W Race Cars has always reserved this manufacturing technology for our own custom built race cars and the chassis components we manufacture and market. Now, you or your company can take advantage of the equipment and services we offer. S&W Precision Specialties can offer you competitive pricing on custom prototypes, small "one-time" production manufacturing or multiple run manufacturing.





Two machines for all your waterjet needs. From large commercial pieces to smaller decorative pieces, the possibilities are limitless.

CAPABILITIES LIST

ABRASIVE WATERJET CUTTING

Two in-house, ultra high pressure water jet cutters by Flow International
Maximum work piece: 6' x 12' • Cuts up to 4" thick steel or 5-1/2" thick aluminum.
Also cuts plastics, rubber, glass, lexan, ceramic tile, brass, copper, carbon fiber, wood and much more!

003" tolerance in 12' work envelope • NO heat affected zone!! Burr free finish
Accepts .DXF, .IGS, .DXB, .MNS, .VGR, and DCZ drawing formats.

If you can draw it - we can cut it! Can't draw it?

Give us a sketch and our Engineering Department will draw it for you.

HAAS TL-15 TURNING CENTER

The Haas TL-15 turning center is a dual-spindle CNC lathe built on the very popular Haas SL-20 foundation. Double-end part capability, a max capacity of 8.2" x 17.5" and a bar capacity of 2.0" (main spindle) make this twin-spindle turning center a high-production machine. The TL-15 also boasts a hybrid tool turret (6 VDI 40 and 6 bolt-on tools) and the ability to add options like live tooling and full C-axis capabilities to the main spindle. for smooth, reliable operation.



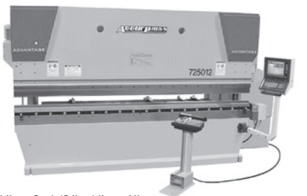
FADAL VMC 15XT Vertical Machining Center



- X-Axis travel - 30"
- Y-Axis travel - 16"
- Z-Axis travel - 20"
- 38" x 16" Table
- Spindle speed 7500rpm
- ATC capacity - 21 position carousel

PRESS BRAKE FORMING

10' x 100 ton Accupress press brake with CNC back gauge.



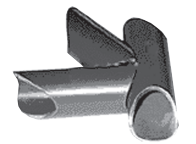
TUBE BENDING

Tube O.D. x Centerline Radius
Hossfeld - 3/4" x 3", 7/8" x 2", 7/8" x 4", 7/8" x 6", 1" x 2-1/2", 1" x 4", 1-1/4" x 3", 1-1/4" x 4", 1-3/8" x 7" 1-1/2" x 5", 1-1/2" x 7-1/2", 1-5/8" x 6", 1-3/4" x 6", 2-1/2" x 6", and 2" x 3" rectangular x 6".
Mandrel Tube Bending - Tube O.D. x Centerline Radius - Pines 1-1/2" x 5", 1-5/8" x 6", 1-3/4" x 6", 2-1/2" x 6", 2" x 3" rectangular x 6"

HIGH SPEED PLASMA

TUBE PROCESSING CENTER

Tube sizes 5/8" diameter to 2" diameter .
.049" wall to .500" wall - 24' maximum length.
Flat cuts at any angle. Coped cuts at any angle.



SHEARING & CUTOFF

Niagara 6' x 10 gage, Niagara 3' x 7 gage, Brobo cold saw, Abrasive saws, Vertical Band Saw.

METORA Automatic Cold Saw

11" Round or 10" x 10" Square Capacity

WELDING

TIG / PULSE TIG • MIG / PULSE MIG

FINISHING

Viking vibratory tumbler, Surfox weld cleaning system, Dynafiles, Dynablade inline sander, Walter variable speed inline sander