

DIRECT FIT FRAMES

REAR FRAME & LADDER BAR PACKAGE

55-56-57 CHEVY
PART #10-5000

64-72 CHEVELLE
PART #10-5010



Photo shows optional 9" Ford housing with axles

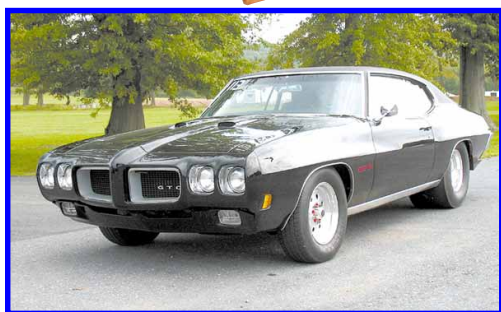
This package also fits: 70-72 Monte Carlo, 64-72 El Camino, 64-72 Cutlass/442, 64-72 Tempest/GTO, 64-72 Skylark and Gran Sport with some modifications, please contact the S&W tech department.



These S & W frames are designed to fit up to 15x33 drag tires, or 31x18.5 Hoosier street radial tires. The frame comes completely welded with 2x3 frame rails, ladder bar crossmember with ladder bar front mounts, rear shock crossmember with upper shock mounts, panhard bar mount and is completely jigsawed at S & W to assure you of proper clearances and ease of installation. The complete welded rear frame is designed to fit under your stock floor with minor modifications and retains most stock body and bumper mounts. This S & W frame must be used with, at least an 8 point roll bar to properly support your new welded frame unit.

Standard package includes:

- Welded rear frame • 32" S & W ladder bars
- Fully welded panhard bar
- Pro/Series shock and spring kit with adj. lower shock mounts
- PVC coated springs matched to your application
- All suspension mounting hardware
- Complete instructions



Dave Sciarretta of Honey Brook, PA uses an S&W back half in his beautiful 11 second Pontiac GTO

\$1019⁰⁰

Package with drag race shock upgrade

with Strange alum. ext. adj. coil-overs **\$1302⁰⁰**

with QA1, alum. ext. adj. coil-overs **\$1323⁹⁸**

Package Options add to package price

- NEW 9" Ford axle housing **\$559⁹⁵**
- Double adjustable ladder bars **\$20⁰⁰**
- Chrome moly rod ends on ladder bars **\$30⁰⁰**
- Teflon lined rod ends on ladder bars **\$6³⁰**
- Track locator (for race applications) . exchange for panhard bar

Option prices are good only with the purchase of a complete rear frame package!

Brand new 9" Ford housings are available for all S&W rear frame packages



Related parts for 55-56-57 Chevys & 64-72 Chevelles

Strange Hi Tuff axle package for kit housing	\$439⁴⁹
Strange S/S axle package for kit housing	\$369⁶⁰
Strange S/T Tuff axle package for kit housing	\$369⁶⁰
Axle packages include bearings & 1/2" stud kit	
8 point roll bar	\$169⁹⁵
10 point roll cage	\$249⁹⁵
Steel wheel tubs	\$79⁹⁵
Aluminum wheel tubs	\$99⁹⁵

Pre-fitted front motor plate for Big or Small Block Chevy	\$131⁴⁰
Pre-fitted mid-mount for Big or Sm. Blk. Chevy	\$62⁵⁰
Fully welded removable trans. crossmember	\$54⁹⁵
Wilwood drag race, rear disc brake kit	\$469⁹⁵
Wilwood pro/street, rear disc brake kit	\$539⁹⁵

